

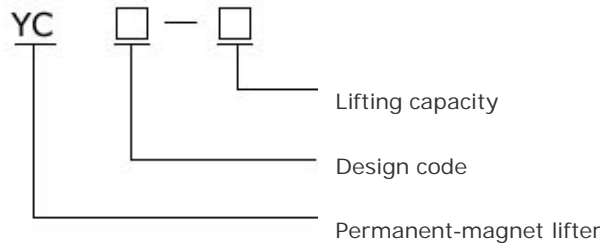


magnetonmove.com

Permanent-Magnet Lifter Series YC

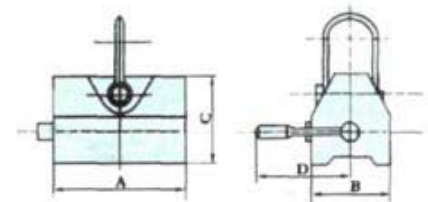
Permanent-magnet lifter series YC is made of high-energy magnetic material adopting scientific magnet circuit theory-featuring huge attraction force,compact,light dead-weight and convenient and safe for operation. It is an ideal energy -economizing lifter and is more convenient than the electromagnet lifter to transfer the normal temperature steel plates in ship-making industry,engineering mechanical industry. automobile industry and so on.There are four series of YC1. YX2, YX3 and YC4 according to the modes of material unloading.

Series YC1 is used for manually handling small platesmaterials and round pieces;series YX2 is used for lifting short and thick steel plate using ratchet wheel unit to hold and release the materials in auto cycle;series YX3 is used for manually handling long and thin steel plates in combined units. The level type structure can guarantee the unit to be operated in synchronism.Series YC4 is used for handing large,irregular and heavy-forging steel plate and casting blank.The design of magnetic road and unloading structure is very unique.It can control the switch state of the crane's magnetic road by controlling the main hook up and down.and also by adopting electrical mode. If place an order.please note"power-driven".



Technical (ata for series YC1

Model	overall dimension (mm)				m (kg) Mass	Lifting Capacity(kg)
	A	B	C	D		
YC1-0.2	130	110	124	250	12	200
YC1-0.3	180	110	124	270	16	300
YC1-0.5	258	110	124	380	25	500
YC1-1	263	180	219	412	68	1000
YC1-2	388	220	269	552	150	2000



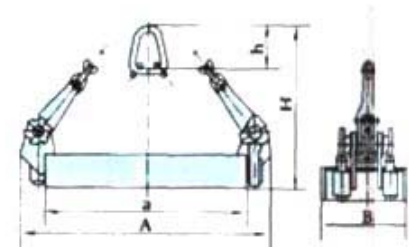
Overall dimension sketch for series YC1

Technical data for series YX2

Model	Lifting Capacity (kg)	Min.Holding Material Contour L xW (mm)	overall dimension (mm)					Mass (kg)
			A	a	B	H	h	
YX2-0.2	200	440 x 185	440	350	185	525	112	50
YX2-0.5	500	560 x 275	560	470	275	645	112	80
YX2-1	1000	720 x 355	720	540	355	760	165	140
YX2-2	2000	870 x 436	870	690	436	905	165	235
YX2-3	3000	1100 x 436	1100	950	436	1090	180	410
YX2-5	5000	1270 x 565	1270	1010	565	1130	220	640



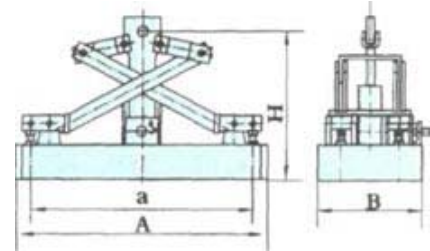
YX2-10	10000	1270 × 1100	1270	1010	1100	1480	350	1450
--------	-------	-------------	------	------	------	------	-----	------



Overall dimension sketch for series YX2

Technical data for Series YC3

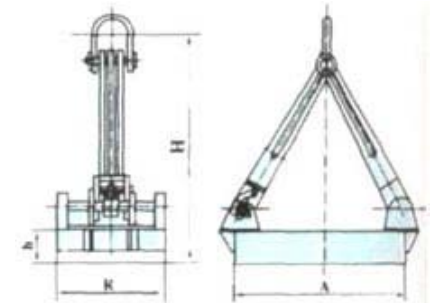
Model	Lifting Capacity (kg)	Min.Holding Material Contour L × W (mm)	overall dimension (mm)				Mass (kg)
			A	a	B	H	
YX3-0.5	500	716 × 196	716	620	196	460	120
YX3-1	1000	824 × 256	824	586	256	570	240
YX3-2	2000	960 × 376	960	848	376	600	320
YX3-3	3000	960 × 406	960	848	406	680	420



Overall dimension sketch for series YX3

Technical data for series YC4

Model	YC4-1	YC4-2	YC4-3	YC4-5	YC4-10	YC4-20	YC4-30	YC4-40	YC4-50
	overall dimension (mm)	A 550	625	690	970	1440	1640	1950	2410
	B 350	460	470	580	800	800	1060	1060	1220
	h 105	110	120	130	155	260	310	310	310
	H 518	672	806	1020	1440	1560	1890	2310	2338
Mass (kg)	130	250	386	575	1197	2110	3730	4610	5370
(kg) Lifting Capacity	1000	2000	3000	5000	10000	20000	30000	40000	50000



Overall dimension sketch for series YC4