

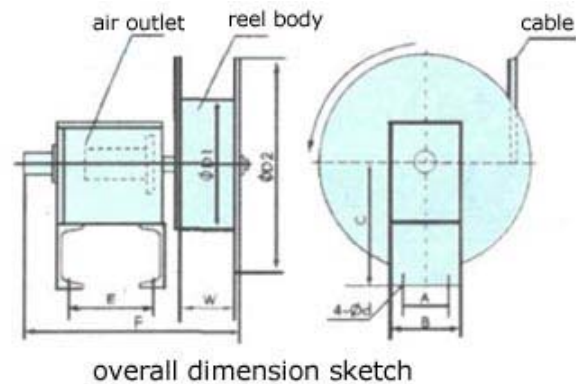
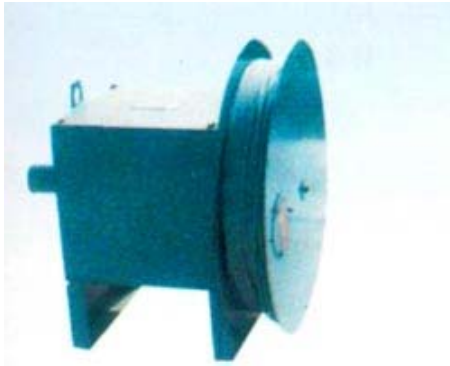


magnetonmove.com

Hose Reel

Hose reel is designed with advanced technology and employed the rotating unit to guarantee safety and reliability in the operation. Its structure types are mainly for overhanging type. The driving modes include elastic driving, moment motor driving and etc.

Hose reel is reliable delivery of varieties of gas, water or liquid and leakage and durable service life. It is an ideal tool for movable air (oil) supply.

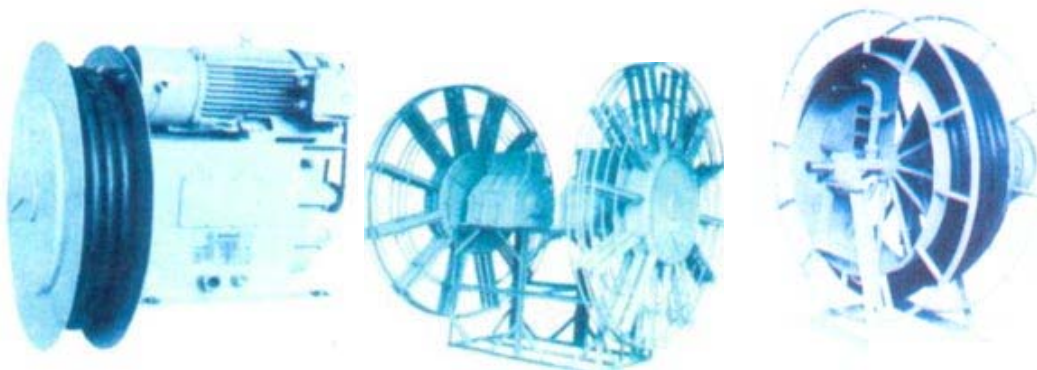


Overall dimension table

Contour items	A	B	C	D ₁	D ₂	d	E	F	G	W	(kg) Mass
QJTA-15-1-III	410	450	200	600	800	18	200	625	90	120	260
QJTA-30-1-III	410	450	200	800	1200	18	200	720	100	120	300

Model selection attentions:

The customers shall provide the following data when ordering: the type of transferring media, working pressure, hose specifications, the distance of mobile air supply, installation pattern, operating environment and etc. for the convenience of selecting models.



©Copyright 2007 YUXIANG Magnetic Materials Ind. Co., Ltd. All Rights Reserved.