



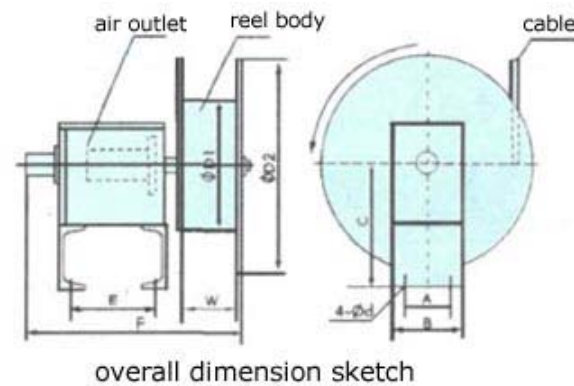
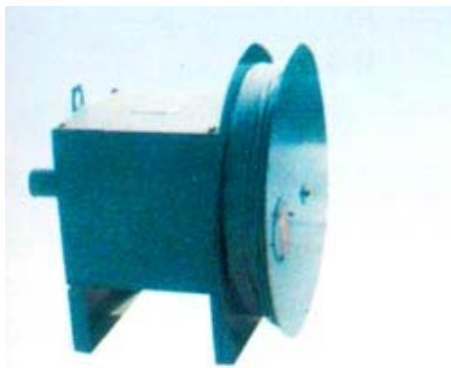
magnetonmove.com

## Signal Cable Reel

The signal cable coder is designed for coiling up and spooling off the signal cable which transfers low electrical signal, such as the signal cable connecting the tensile and compression sensor. When the testing equipment is moving, the coiler will intelligently trace it and coil up or spool off the cables, avoiding abrasion or pressing broken because of the cables storage irregularly, thus make sure the testing procedures can be carried on smoothly.

### Structure features:

1. Using differential ring to transfer the signal without contact in the cables.
2. Coder end equipped with limit protection unit to keep the differential ring safe.
3. Using spiral spring power to rotate the coiler to coil up or spool off the cables automatically and intelligently without itself energy consumption. This structure keeps reliability in operation and much less worn-out.



Overall dimension table

Contour items	A	B	C	D <sub>1</sub>	D <sub>2</sub>	d	E	F	W	(kg) Mass
1	286	336	318	500	600	13	283	600	100	95
2		336	318	500	600		362	680		105
3		372	418	700	800		457	888		135
4		372	418	700	800		521	958		150

Main technical data

Cable Model	10m Series	Contour Item	15m Series	Contour Item	20m Series	Contour Item	25m Series	Contour Item
RVVP 4×0.5	JTA-10-4	1	JTA-15-4	2	JTA-20-4	3	JTA-25-4	4
RVVP 6×0.5	JTA-10-6	1	JTA-15-6	2	JTA-20-6	3	JTA-25-6	4

©Copyright 2007 YUXIANG Magnetic Materials Ind. Co.,Ltd.All Rights Reserved.