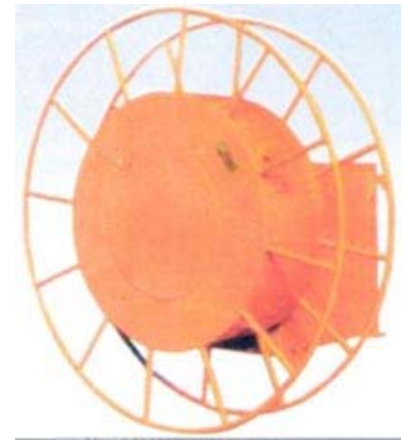




magnetonmove.com

### Guide for pattern selection

1. Varieties of cable reels and hose reels (transferring gas or liquid) are available designed and manufactured by Yuxiang.
2. Cable reel driven by swirling spring is optional for the cables with less weight and short traveling distance. Cable reel driven by moment motor or three -phase asynchronous motor (hysteresis motor) is suitable for the cables with heavy weight and traveling distance. According to the on-site exogenous force or weight-loaded driving can be used as driving power.
3. The winding length of the cable comes standard upon "L" in Installation Pattern Sketch. The available cable lengths are as follows : 1).L+3 loops in Pattern A; 2).L+h+3 loops in Pattern BE; 1 loops in Pattern C & D; 4).The cable length in Pattern E and F can be determined upon the on-site conditions. Please note when ordering.
4. In pattern C, the cable reel is mounted on the ground. There is relative friction between the cables and the ground when the reel is winding or unwinding the cables. Thus, a rollaway nest should be mounted within the cable motion area to minimize wear-and-tear of the cables.
5. In pattern F, there generally comes standard of  $H=0.14L$ ,  $h=0.5H$ . If  $H$  is less than  $0.14L$  and  $h$  less than  $0.5H$ , the values of  $H$  and  $h$  must be specified when ordering.
6. Cable reel will be equipped with specially designed roller brackets for the convenience of installation if provided with electric block to run on the single bridge crane.
7. Cable reel outlet directions are marked in the overall dimension drawing. Please note when ordering unless otherwise specified.
8. The cable weight (transferring tube ) is excluded from the column of "Mass" in overall dimension table.
9. If there is no special specification, the moment motor powered and hysteresis motor powered cable reels are generally of overhanging type in the structure patterns.
10. The customer should provide the extra cables if the cable length exceeds 30 meters (including 30 meters).



#### Structure types

I-slip ring built -in (Usually not marked) II-slip ring exterior installed  
III-Overhanging installed

phase number or hose number

drum length of cable

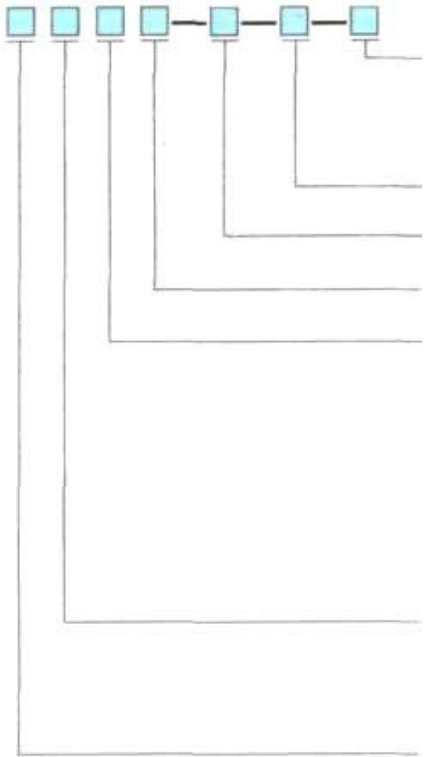
Capacity: electric current (signal table reel or hose reel without this option)

#### Installation patterns:

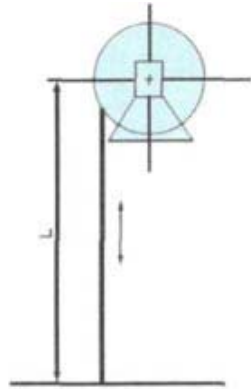
Vertical coiling  
Vertical coiling through radial reversing wheel  
Horizontal coiling on the ground (reel fixed)  
Horizontal coiling on the ground (reel movable)  
Horizontal Hanging Coiling  
Hanging Coiling

#### power types:

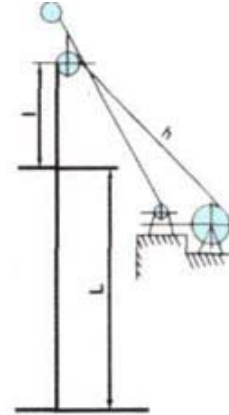
T-spring type D- moment motor powered  
asynchronous motor powered cable reel



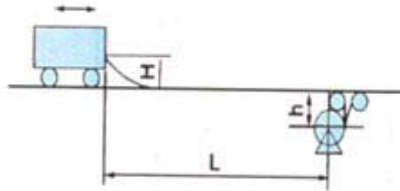
Reel type:  
J-cable ree  
QJ- gas hose reel



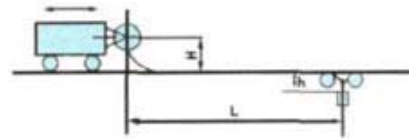
Pattern A-Vertical coiling



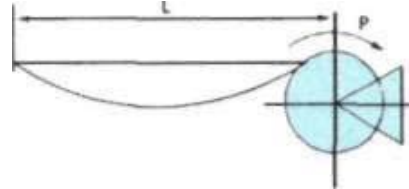
Pattern B-Vertical coiling through radial reversing wheel



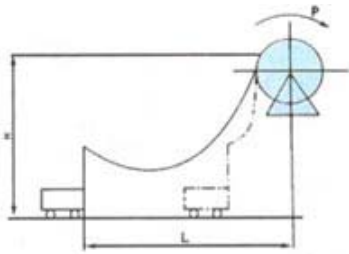
Pattern C-Horizontal coiling ground (reel fixed)



Pattern D-Horizontal coiling on the ground (coiler movable)



Pattern E-Horizontal overhanging coiling



Pattern F-Overhanging coiling

©Copyright 2007 YUXIANG Magnetic Materials Ind. Co.,Ltd.All Rights Reserved.