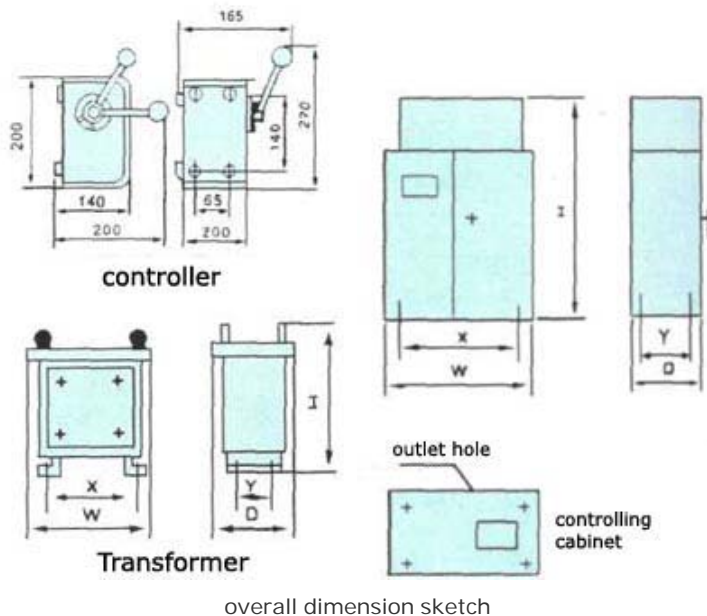




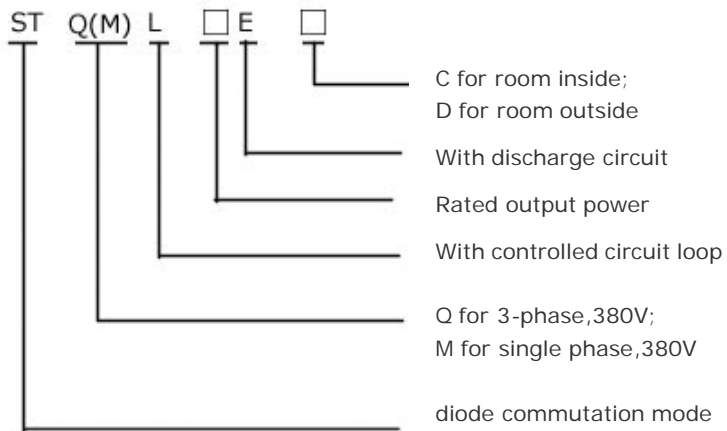
magnetonmove.com

Commutating Controlling Unit Series STQ(M)L in Rated Voltage Controlled Mode

This product series works to step down three-phase AC power supply by transformer and then achieve DC 220V voltage through bridge commutating apparatus. The unit consists of auto air switch, transformer, two-phase or three-phase bridge rectifier assembly and AC contactor. The circuit configures short-circuit and over voltage protection devices. A rectifier will be attached outside under handling capacity of electromagnet more than 19KW, while using single phase bridge commutating mode under handling capacity of electromagnet less than or equal to 4KW.



Model designation



Main technical data

Model	(V) input voltage	(V) output voltage	output power (kw)	controlling cabinet					Mass (kg)	Model	Main rectifier					
				overall dimension (mm)							overall dimension (mm)					Mass (kg)
				W	D	H	X	Y			W	D	H	X	Y	

STML-3E-C	AC380V/2Φ	DC-110V	3	650	450	1250	610	400	120	ZDG-3.5/0.5	Transformer installed inside						
STML-4E-C	AC380V/2Φ	DC-220V	7						120	ZDG-4.5/0.5							
STQL-7E-C	AC380V/3Φ	DC-220V	7	900	450	1100	860	400	135	ZSG-5.5/0.5							
STQL-9E-C	AC380V/3Φ	DC-220V	9						180	ZSG-7/0.5							
STQL-14E-C	AC380V/3Φ	DC-220V	14	1300	450	1125	1260	400	230	ZSG-11/0.5							
STQL-19E-C	AC380V/3Φ	DC-220V	19						240	ZSG-15/0.5							
STQL-25E-C	AC380V/3Φ	DC-220V	25	1000	450	1450	960	400	220	ZSG-25/0.5		550	480	625	450	380	150
STQL-32E-C	AC380V/3Φ	DC-220V	32						230	ZSG-30/0.5		600	510	675	500	410	190
STQL-38E-C	AC380V/3Φ	DC-220V	38						250	ZSG-35/0.5		600	510	675	500	410	210

©Copyright 2007 YUXIANG Magnetic Materials Ind. Co.,Ltd.All Rights Reserved.