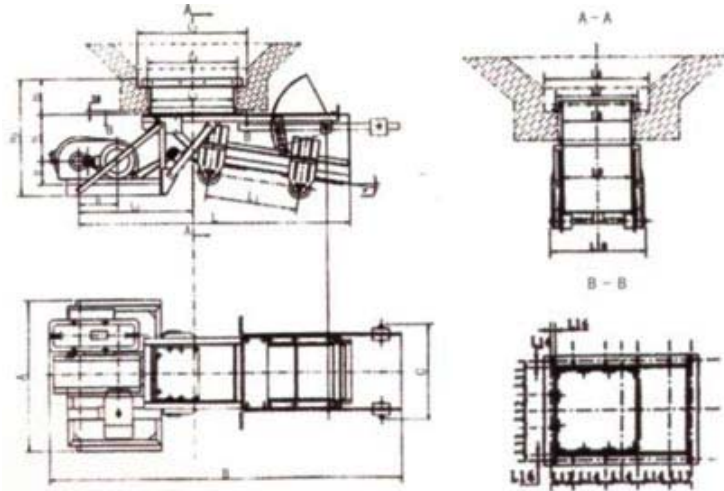




magnetonmove.com

### Reciprocate Type Give Coal Machine

K type reciprocate give coal machine suit use for ground produce system of coal mine and coal mine and coal washing factory and power plant. It take coal from last technology equipment event even take to below technology equipment. It compose of base plate (give coat trough), drive terrace, funnel sluice, sustain roll etc. Please explain whether or not need funnel, entrance, and if use prevent explode motor when order goods.



main technical parameter

model		K-0				K-1				K-2				K-3				K-4															
crank revolution(rpm)		57								57								62								62							
crank place		4	3	2	1	4	3	2	1	4	3	2	1	4	3	2	1	4	3	2	1	4	3	2	1								
base plate travel		200	150	100	50	200	150	100	50	200	150	100	50	200	150	100	50	240	140	130	50												
produce capacity	(t) soft coal	90	67	45	22	135	100	68	31	200	150	100	50	300	210	150	75	530	390	260	130												
	(t) anthracite	100	75	50	25	150	112	75	38	225	170	113	55	330	247	165	83	590	440	290	148												
motor	model	Y160M1-8 or YB160M1-8				Y160M1-8 or YB160M1-8				Y160M1-8 or YB160M1-8				Y160M1-6 or YB160M1-6				Y160M1-6 or YB160M1-6															
	(kW) power	4				4				4				7.5				15															
	(rpm) revolution speed	720				720				720				960				970															
retard machine	model	JZ0350				JZ0350				JZ0350				JZQ400				JZQ500															
	retard ration	12.63				12.63				12.63				15.75				15.75															
(mm) max metall	max metall (contain below 10%)	250				350				400				500				700															
	max metall (contain above 10%)	200				300				350				450				550															
weight (kg)	with funnel	1150				1253				1420				1940				2880															
	no funnel	1080				1157				1288				1830				2680															